



Your Talent Experience Platform



*Learn your way, whenever
and wherever you want.*



*Engage your employees with
collaborative learning.*



*Perform at your best and
motivate your people.*

YOUR ALL-IN-ONE TALENT EXPERIENCE PLATFORM

In a world where uncertainty and constant change are the only certainties, relying on isolated and rigid talent management technology is a dangerous risk.

The burden of disconnected, weighty systems harms workforce productivity and disorients your people. Resulting in:

- Poor performance
- Disengaged employees
- And a lack of agility that breeds a fragile organization

You need talent management technology that is adaptable, open to change and engages your people to perform at their best, all united and aligned with company goals.

The Totara Talent Experience Platform unites three essential solutions to help you build a better workplace - one that's agile and resilient enough to prosper in an ever-changing and distributed world of work.

- 1) **Totara Learn**, our transformational Learning Management System (LMS)
- 2) **With Totara Engage**, our Learning Experience Platform (LXP)
- 3) **Plus Totara Perform**, our robust performance management system

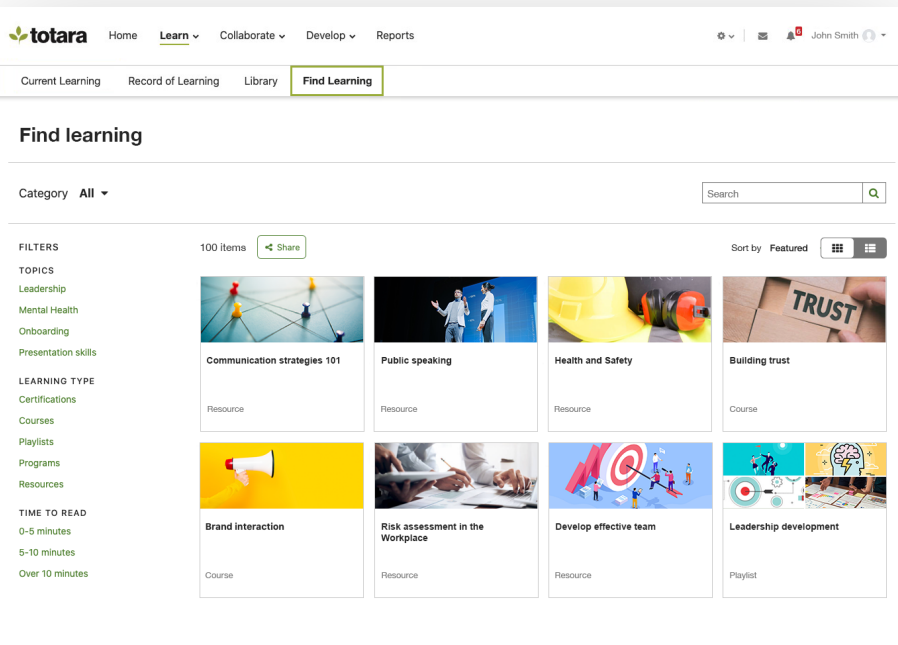
You get an adaptable Talent Experience Platform that unlocks your organization's full potential by ensuring that your people Learn, Engage and Perform at their best.



ACCESS AN ALL-IN-ONE PRODUCTIVITY SUITE, WITH JUST A FEW CLICKS



Learn & Grow



The Learning Management System (LMS), trusted by thousands of customers, upskills your workforce the way you want, with the power and adaptability to deliver transformational learning.



AUDIENCES AND AUTOMATION

to automatically assign learning to groups that are categorized by role, team, skills and more.



COMPLIANCE AND TRAINING MANAGEMENT

that improves safety and security while minimizing business risks.



LIVE EVENTS AND SEMINARS

to empower collaboration and problem solving through centrally organized blended learning.



CUSTOM REPORT BUILDING

to track progress and completion of learning activities, and send automatic email notifications to stakeholders.

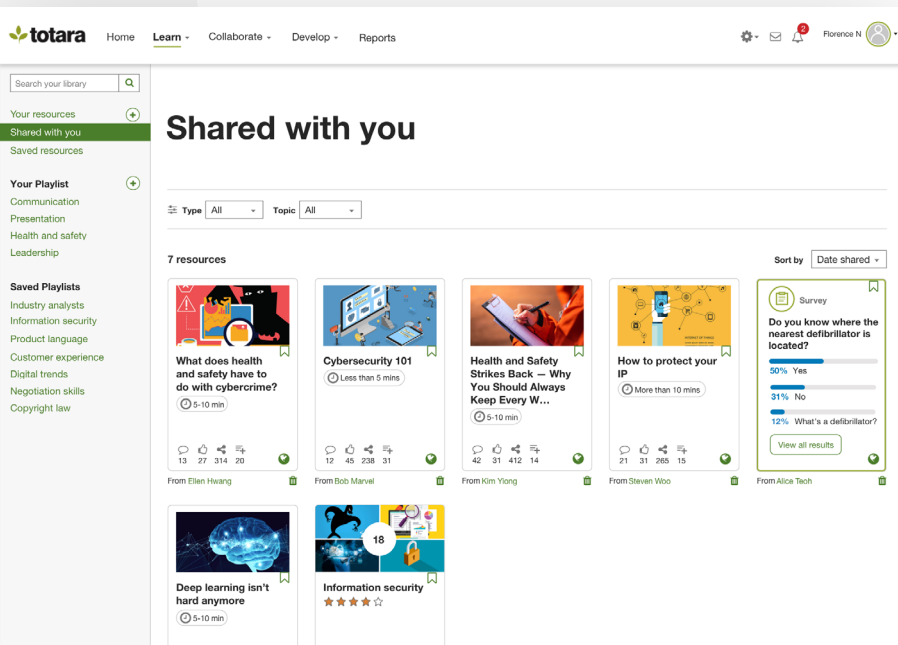


MULTITENANCY AND EXTENDED ENTERPRISE DELIVERY

to cater to multiple groups or customers from a single instance of your LMS.

*Visit the Totara Learn product page for more information:
totaralearning.com/totaralearn*





The easy-to-use Learning Experience Platform (LXP) that engages and unites your workforce through collaboration and informal learning.



CURATED CONTENT PLAYLISTS

to break down silos, spread know-how to where it's needed and encourage collaborative learning.



COLLABORATION WORKSPACES

to accelerate skills acquisition, deliver digestible knowledge in the flow of work and unite teams.



MICROSOFT TEAMS INTEGRATION

to solve complex problems from a central digital space without any of the complexities that come with switching between different tools.



PERSONALIZED RECOMMENDATIONS

suggest content relevant to employees' interests, skills and needs, all based on actual user behavior.



SURVEYS

to quickly generate insights by collecting qualitative and quantitative feedback from your teams.



INTERACTIVE AND SOCIAL FUNCTIONS

like ratings, comments and curation to complement formal training and nurture a connected learning culture.

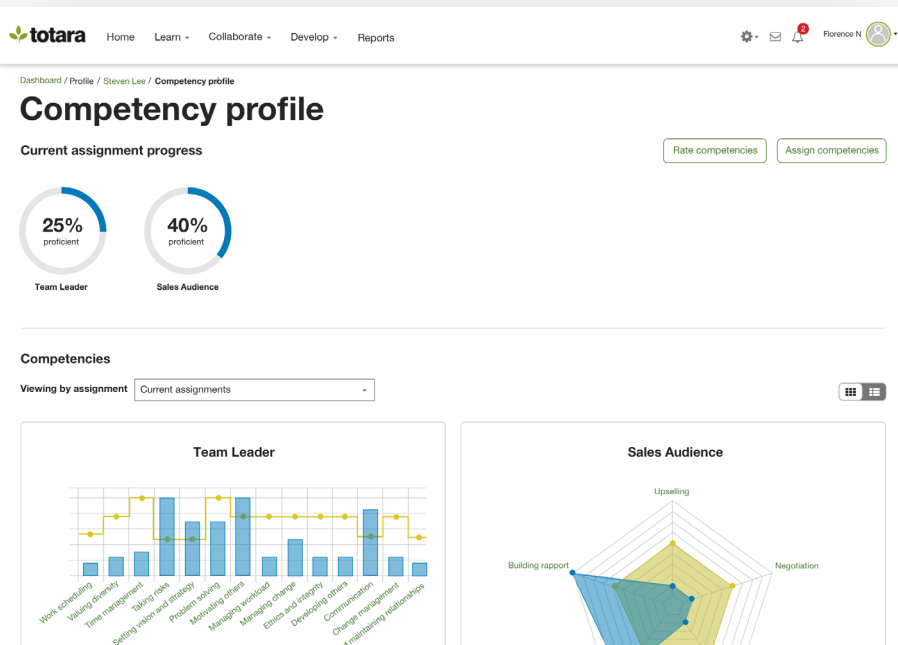
Visit the Totara Engage product page for more information:
totaralearning.com/totaraengage





Perform & Succeed

The performance management system to drive workplace productivity anytime, anywhere.



PERFORMANCE REVIEW WORKFLOW BUILDER

enabling you to match performance management processes with your unique workflows.



FREQUENT AND FLEXIBLE PERFORMANCE CHECK-INS

to ensure employee alignment and boost organizational output.



360-DEGREE FEEDBACK

to accurately gauge strengths, weaknesses and opportunities by balancing self-evaluation with input from peers.



SKILLS AND DEVELOPMENT

to identify and close skill gaps across the entire workforce and prescribe actions and content that aligns the goals of your people and organization.

totaralearning.com/totaraperform

**READY TO
UNLOCK PEAK
PERFORMANCE?**



Combined, these three systems form a unified Talent Experience Platform for your people, bringing together all the critically important talent management tools and processes you need to thrive in your new world of work.

*Schedule a personalized demo
or visit us on totaralearning.com*

